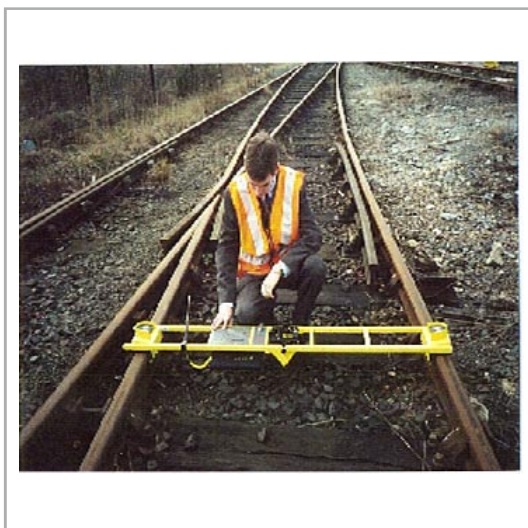




suparule



## Railway Overhead Measurement (ROM)

- Accurate, Safe and Fast
- Easily Transportable
- Ideal for night-time use
- PC Compatible Download
- Stores measurements

### DESCRIPTION

The ROM (Railway Overhead Measurement) Unit measures the height and stagger of overhead cables on electrified railway networks.

It is extremely important for railways to measure the position of the overhead contact wire in terms of height above rail level and horizontal distance from the centre of the track.

Keeping this contact wire, which supplies electrical power to train, within its design parameters optimises current transfer and minimises wear of the pantograph carbon and contact wire.

### FEATURES

- Accurate and fast measurements.
- Accurately measures stagger of single and double contact wire and configurations.
- Displays measured gap between contact wire and catenary.
- Backlit display facilitates night maintenance.
- Inherently safe - no physical contact with the live wire.
- Records up to 200 measurements that can be stored and downloaded into a computer for analysis (Windows® compatible).
- Configurable parameters by end-user.
- Folds down to less than 1m (3ft) for easy transport.
- Endorsed by major railways worldwide.

### OPERATION

The ROM operates using four ultrasonic transducers housed at opposite ends of a stainless steel fixture.

The operation of the four transducers is controlled by software and, when activated, the four transducers emit a number of sound bursts (parabolic pressure waves) which are reflected back from the target cables.

This elapsed time is calculated, compensated for temperature and the distance displayed in imperial or metric.

### SPECIFICATIONS

<b>Height Range</b>	7 m
<b>Height Accuracy</b>	± 5 mm
<b>Stagger Range</b>	± 450 mm
<b>Stagger Accuracy</b>	± 10 mm
<b>Standard Track Gauge</b>	1435 mm
<b>Minimum Wire Diameter</b>	12.5 mm
<b>Temperature Operating Range</b>	-10 °C to +40 °C
<b>Weight</b>	7 Kgs / 16 lbs
<b>Recharge Time</b>	Up to 2 hours
<b>Charged Battery Life</b>	8 Hours
<b>Memory Storage Capacity</b>	200 Measurement Locations
<b>Warranty</b>	1 year

Distributor:

Suparule Systems Ltd.,  
Lonsdale Road,  
National Technology Park,  
Limerick, Ireland.

Ph.: +353 (0) 61 201030  
Fax.: +353 (0) 61 330812  
Email: info@suparule.com  
Web: www.suparule.com